

Kaitiā Business & Professional Women Inc



Business & Professional Women, Kaitiā

BULLETIN

May 2014



Women working for women

e bulletin for
May 2014



May Event 2014

WHEN: Tuesday 20th May

WHERE: Orana Motor Inn

TIME: 5.30pm

COST: \$27.00

Please give no's to Marie by midday 14th
(027 343 2252).

GUEST SPEAKER - Raewyn to review National Conference

**Bring: Keys to Achievement Booklets,
Lorraine Cameron will update you all.**

Duties for this Month

HOSTESS:

Donna

INTRODUCER:

Lorraine

THANKER:

Helen

GRACE:

Marlene

THOUGHT FOR THE DAY:

Pam

RAFFLE

Sharon

READ COLLECT

Tina

An **apology** is required for each dinner meeting you are unable to attend otherwise you will be charged the cost of the meal. If you are bringing guests, please let **Marie Berghan** know the names of the people coming before **midday** on **Monday 19th**
(Ph 027 343 2252)

e bulletin for
May 2014



President's Pen by Raewyn Pennell....



Greetings Ladies!

Sandy and I flew to Wellington, as your delegates to BPWNZ's 50th Conference, on Thursday afternoon of the 24th April, and this was our only free time for the next three days - a little shopping, a glimpse of Wellington Harbour through the high rise offices and hotels and an early night to prepare for total immersion in BPW matters.

Attending BPWNZ National Conference is always stimulating and rewarding, and this year was no different!

On Friday morning, we attended both the wreath laying ceremony at the national war memorial and afterwards stood on the grass in front of Parliament to be part of the National Memorial Service there. Watching parliamentarians and consulates, the armed services, Wellington's mayor, RSA and many other officials pay tribute to the ANZACS was both moving and heartwarming.

A special time and place to spend Anzac morning.

Celebrating BPWNZ's 75th Year and the 50th Conference as well was a biggie - Sandy and I were involved from the moment we registered on Friday afternoon.

We attended the pre-conference Budget Review, and President Carolyn Savage's reception prior to the Opening and Awards dinner, where many beautiful Southern belle costumes abounded, reflecting the conference theme - 'WE DO GIVE A DAMN' (with no apologies to Clark Gable!)

I will be giving a full report on the two days of conference at our dinner meeting on Tuesday 20 May - Sandy flies out that day to BPW International Conference at Jeju in Korea, as part of the New Zealand contingent and as an alternate NZ delegate - we wish her safe travels and a wonderful experience.

Two highlights of the conference for Kaitaia - I was very pleased to sign a nomination form for Sandy to stand as National BPWNZ Treasurer, and she was duly elected with the new executive on Sunday afternoon. Along with our Lorraine Cameron, we now have two members on the New Zealand executive.

Congratulations Sandy! You will be an excellent Treasurer!

At the Awards dinner, Marie was one of five BPW members presented with a Distinguished Service Award - a fitting tribute to a loyal, consistent, hard working member of our team. Congratulations Marie!

e bulletin for
May 2014



And - BPW Kaitaia and BPW Doubtless Bay will be co-hosting the Northern Regional Meeting over the weekend of 16/17 August - mark your calendars now for a great weekend!

The first planning meeting has been held, and I will share the details with you over dinner next Tuesday!

As you read this, I will be in the throes of packing also, as Rosco and I fly

out the day after our meeting, for nearly two months. I will miss the June dinner meeting and candle lighting, but I will be just freshly back for July (in body if not in mind.....!!)

I look forward to sharing the conference details with you all next Tuesday -

Raewyn

Please note the following dates for your BPW Club calendars.

It is hoped that with plenty of notice Clubs will be able to send as many members as possible to these events.

9th August Midland Regional meeting in Rotorua –Times to be confirmed
16th-17th August Northern Regional Meeting in Taipa Northland –Times to be confirmed
30th August Central Regional Meeting hosted by BPW Mana

18th-19th October Leadership Forum to be held in Pukekohe,

BPW Franklin where possible will billet as many as possible, please advise numbers as soon as possible so we can make arrangements.

If you prefer a motel please also advise so I can get costs for you

Regards

Gail Littin

BPW NZ Executive Secretary

Contact Details

New Zealand Business & Professional Women (BPW NZ)

PO Box 28 326 Remuera Auckland 1136 NZ

P:+64 9 2389703 M: +64 274 586648 [E:gail.littin@ps.gen.nz](mailto:gail.littin@ps.gen.nz) or secretary@bpwnz.org.nz

Women working for women

e bulletin for
May 2014



BUDGET 2014

Support package for families

The Budget includes a \$500 million package over four years to support families, including:

- *\$171.8 million to extend paid parental leave (PPL):*
 - *Additional four weeks, starting with a two-week extension from 1 April 2015, and another two weeks from 1 April 2016.*
 - *Extend eligibility of paid parental leave to caregivers other than parents (for example, "Home for Life" caregivers), and to extend parental leave payments to people in less-regular jobs or who recently changed jobs.*
- \$42.3 million to increase the parental tax credit (PTC) from \$150 a week to \$220 a week, and increase the payment period from eight to 10 weeks, from 1 April 2015.
- \$90 million to provide free GP visits and prescriptions for children aged under 13, starting on 1 July 2015.
- \$155.7 million to help early childhood centres remain affordable and increase participation towards the 98 per cent target.
- \$33.2 million in 2014/15 to help vulnerable children, including eight new Children's Teams to identify and work with at-risk children, screening of people who work with children, and additional resources to support children in care.

e bulletin for
May 2014



BPW NZ Executive Secretary - Gail Littin

May		
May 23-27th	BPW Korea International Congress	Jeju Island Korea

FROM BPWNZ

Contacting BPWNZ

We'd like to make it easy for you to keep in contact with the BPW NZ Executive and have put together the information below to support you with this.

Note: the President's Associate keeps a record of all correspondence so if you're emailing any of the Executive, including conveners, please copy (cc) her in.

BPW NZ President:

Vicky Mee (BPW Franklin) President@bpwnz.org.nz

If the correspondence with the President is of a general nature, and by email, please copy in the President's Associate. You may choose to also copy in the appropriate Executive Officer, Convener and/or Club Liaison.

President's Associate:

Sheila Riddell-Harvey: presass@bpwnz.org.nz PH: 09-2321 140

BPW NZ website - password: **Impbpwnz1939**

(A little lesson in history
- Imp for Lena Madessin Phillips, bpw nz, and the year bpw began in NZ)

e bulletin for
May 2014



From the Committee....

Sandy is on her way to Jeju ☺

BPW KOREA INVITES YOU TO BEAUTIFUL JEJU ISLAND!

**COUNTDOWN TO CONGRESS:
28th BPW International Congress
May 23rd – 27th 2014**

WWW.BPW-INTERNATIONAL.ORG/CONGRESS2014



e bulletin for
May 2014



Keys to Achievement Programme

Could everyone please bring their Keys to Achievement booklets!

Lorraine Cameron has agreed to be our KTA mentor and hold our booklets, which will be updated at our dinner meetings, as tasks/challenges are completed. Lorraine will talk to us about KTA before dinner.....

How will members benefit from participating in the Keys to Achievement program?

- Take up the challenge and learn more about yourself and your fellow BPW Club members.
- Learn about all the aspects of BPW; Policy, Development, International, Leadership, Networking
- Receive a certificate of completion for each level achieved and the corresponding post nominal after their name.
- Receive recognition within BPW through the titles, Graduate of BPW for the first level, the second level is Professional of BPW and the final level is Fellow of BPW.
- Above all, through participating in the Keys to Achievement program, you will meet new people, develop new skills, contribute to BPW and have fun.



e bulletin for
May 2014



MEMBER NAME	EMAIL	PHONE	CELL
Berghan, Marie	mberghan@xtra.co.nz	4080237	027 343 2252
Cameron, Lorraine	Lorraine.c@xtra.co.nz	4087299	027 475 9078
Dawson, Pam	BR-PA-DAWSON@xtra.co.nz	4080556	021 162 1492
Dawson, Tina	235 Okahu Road, Kaitaia (no email)	4081480 wk	027 946 6473
Harrison, Donna	PO BOX 34, Awanui – no email option	4067343	
Kemp, Cathleen	Cathleen@kemps.net	4098191	02102740804
Munro, Helen	heldonmunro@slingshot.co.nz	4084992 hm	021 408 871
O'Sullivan, Marlene			
Pennell, Raewyn	ostemu@ihug.co.nz	4068807	0274 921 931
Peterson, Nancy	peterston@maxnet.co.nz	4084825	
Pfaender, Gabrielle	Nznorth@yahoo.com		021 884 145
Rae, Justine	Justine.rae001@msd.govt.nz	4080093	9010414
Rider, Sharon	riders.sports@xtra.co.nz	4080252	
Spinley, Jan	janspinley@farmside.co.nz	4087978	021 323 869
Torrington, Ciaran	ciaransteve@ihug.co.nz	4093499	0211506201
Waldron, Naomi	Naomi@farnorthmidwives.co.nz	4060877	027 756 5456
White, Sandy	kdfkainc@xtra.co.nz	4081488	027 479 1375
LIFE MEMBERS			
Andrea Panther	Apanther71@hotmail.com	07 3080300	02108411927

e bulletin for
May 2014



May Birthdays



Helen Munro 15th
Gabrielle Pfaender 17th

Thoughts for the Day

*Nothing
is a waste of time
if you use the experience wisely*

Auguste Rodin

Did You Know

Far North Community Food Bank

6 South Road is open 12pm-4pm.

The bank has been going for 13 years and began on 27th July 2000 as an idea by Pat Casey and Major David Griffiths.

Registered as a trust it has 10 organisations giving support.

Funding is from ASB Community, The Tindall Foundation, NZ Lotteries, Food Funds, and COG's.

ASB have granted money to set up new gardens. At present 6 gardens are on sections where the people caring for them own their homes. They send produce to the bank.

Volunteers are needed, Morag is not asking for hand out but a hand up.

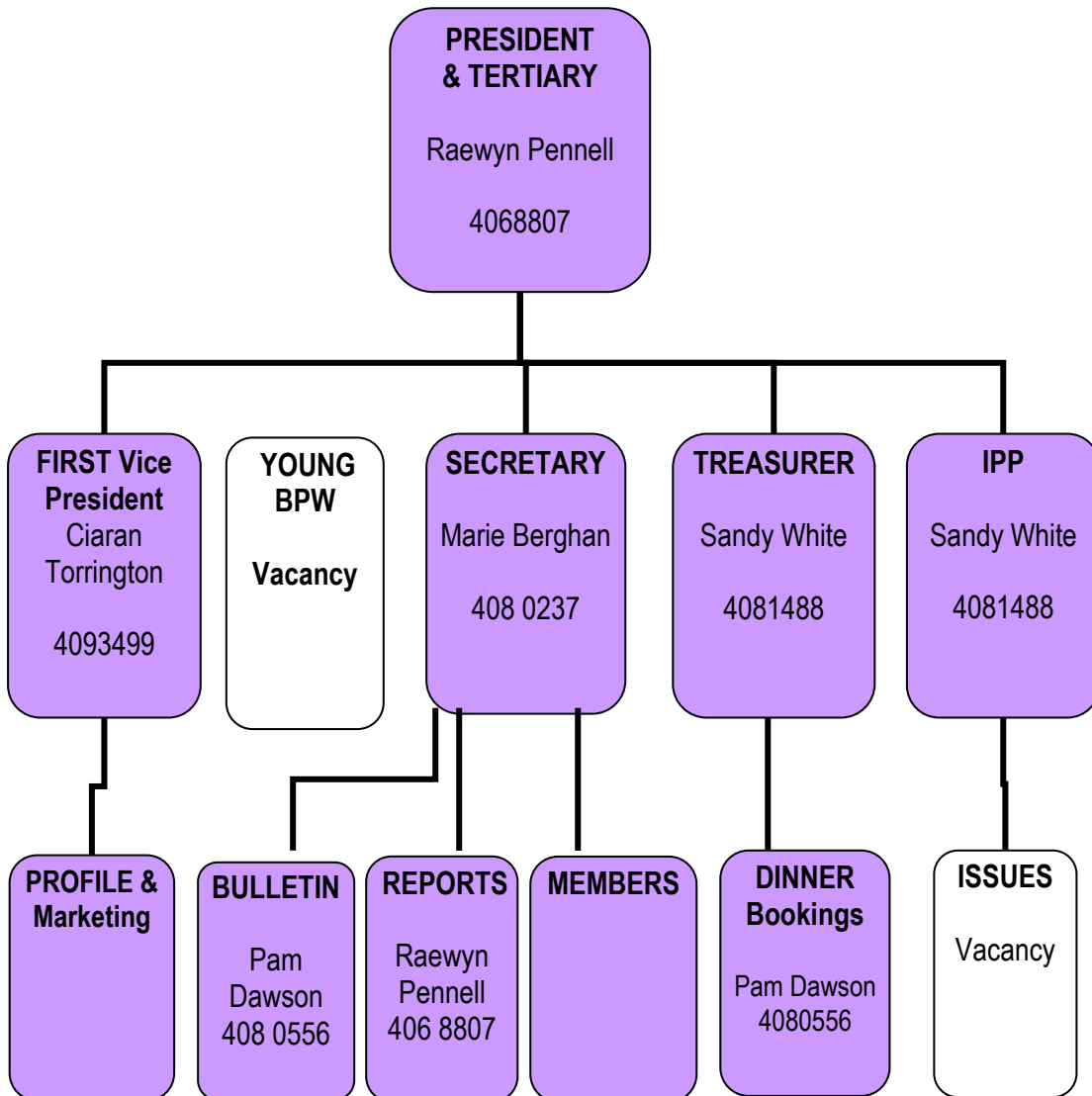
Reminder to Guests

You can come along to any **three** meetings. After this time if you are interested in what we can offer, then **please** ask the person who invited you along or a committee member for a membership form.

e bulletin for
May 2014



Who is on your Committee?



e bulletin for
May 2014



**Support our local businesses
Who proudly support us**

**EMU OIL PRODUCTS,
FEATHERS & EGGS**

388 Kaimaumu Road, RD1, Awanui, Far
North,
New Zealand

☎ Ph/Fax: 09 406 8807

✉ email: ostemu@ihug.co.nz